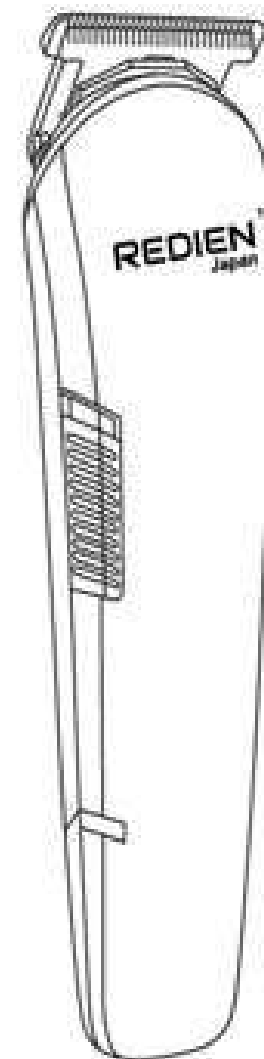


REDIENTM Japan

Instruction
HIGH PRECISION
Hair Trimmer

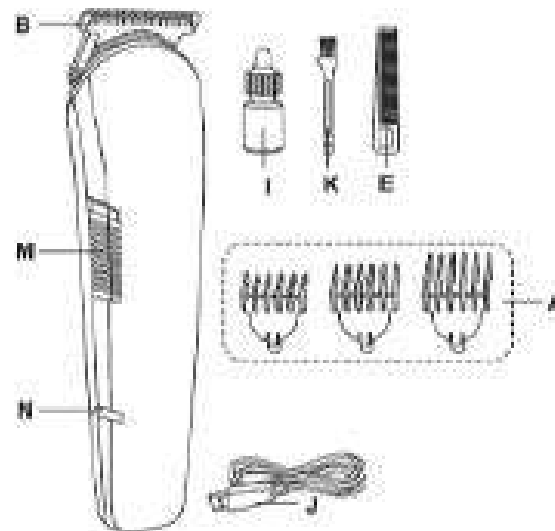
RN-8135



ENGLISH

General description

- A. Hair clipping comb
- B. Cutting element
- E. Comb
- I. Oil bottle
- J. Adapter
- K. Cleaning brush
- M. On/off switch
- N. Charging light



Important

Read this user manual carefully before you use the appliance and save it for future reference.

Danger

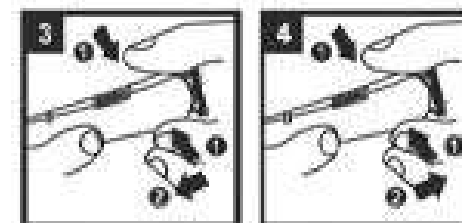
Make sure the adapter does not get wet.

Warning

- Check if the voltage indicated on the adapter and on the appliance corresponds to the local mains voltage before you connect the appliance.

attached and detached in the same way.

1. To attach the attachment, press the button to connect the attachment. (Fig.3)
2. To detach the attachment, press the button to pull out the attachment. (Fig.4)



Hair clipping

Preparing for hair clipping

Make sure that the appliance is fully charged when you start clipping.

It is not possible to run the appliance from the mains.

Only use the appliance on clean, dry hair. Do not use it on freshly washed hair.

1. Make sure that the head of the person whose hair you intend to cut is at the same level as your chest.

This ensures that all parts of the head are clearly visible and within easy reach.

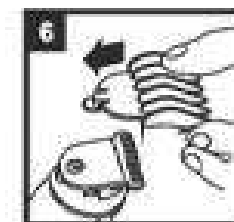
2. Comb the hair in the direction of growth (Fig.5).



3. Put the cutting element on the handle (see section 'Attaching/detaching attachments' in chapter 'Preparing for use').

Clipping with hair clipping comb

1. Slide the hair clipping comb into the guiding grooves on both sides of the handle ('click') (Fig.6).
2. When you are trimming for the first time, start at the maximum trimming length 12mm hair clipping comb to familiarise yourself with the appliance. Using setting 3mm hair clipping comb installed will result in a stubble look'.



Tip: Write down the hair length settings you have used to create a certain hairstyle as a reminder for future clipping sessions.

3. Switch on the appliance.

4. Move the appliance through the hair slowly.

- To clip in the most effective way, move the appliance against the direction of hair growth.
- Since all hair does not grow in the same direction, you need to move the appliance in different directions (upward, downward or across) (Fig.7).
- Make sure that the flat part of the comb is always fully in contact with the scalp to obtain an even result.
- Make overlapping passes over the head to ensure that you cut all the hair that needs to be cut.
- To achieve a good result with curly, sparse or long hair, use a comb to guide the hair towards the appliance.



5. Regularly remove cut hair from the comb.

- If a lot of hair has accumulated in the comb, remove the comb from the appliance and blow and/or shake the hair out of it.

Contouring without hair clipping comb

- You can use the appliance without hair clipping comb to clip hair very close to the skin (0.6mm) or to contour the neckline and the area round the ears.

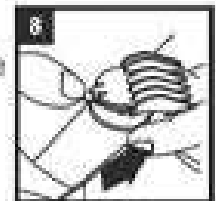
- Be careful when you clip without comb because the cutting element removes every hair it touches.

1. Press the setting selector upwards and pull the comb off the trim parts. (Fig.8)

2. Before you start to contour the hairline round the ears, comb the hair ends over the ears.

3. Tilt the appliance in such a way that only one edge of the cutting element touches the hair ends when you shape the contours round the ears (Fig.9).

Only cut the hair ends. The hairline should be close to the ear.



-
- Keep the appliance, charging stand and adapter dry.
 - The adapter contains a transformer. Do not cut off the adapter to replace it with another plug, as this causes a hazardous situation.
 - This appliance is not intended for use by persons (including children) with reduced physical, sensory or mental capabilities, or lack of experience and knowledge, unless they have been given supervision or instruction concerning use of the appliance by a person responsible for their safety.
 - Children should be supervised to ensure that they do not play with the appliance.

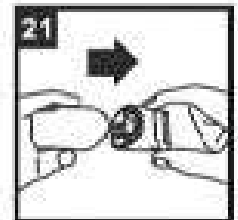
Caution

- Use, charge and store the appliance at a temperature between 15°C and 35°C.
- Only use the adapter supplied to charge the appliance.
- If the adapter is damaged, always have it replaced with one of the original type in order to avoid a hazard.
- Do not use the appliance when one of the attachments or combs is damaged or broken as this may cause injury.
- Be careful with hot water. Always check if the water is not too hot, to prevent your hands from getting burnt.
- This appliance is only intended for clipping human scalp hair and for trimming and grooming the human beard, moustache, sideburns, nose hair and ear hair. Do not use it for another purpose.
- Never try to trim your eyelashes.
- If the appliance is subjected to a major change in temperature, pressure or humidity, let the appliance acclimatise for 30 minutes before you use it.

4. To contour the neckline and sideburns, turn the appliance and make downward strokes (Fig. 10). Move the appliance slowly and smoothly. Follow the natural hairline.

Cleaning

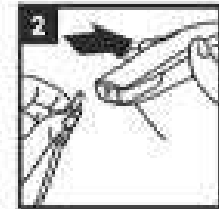
- Do not use water or a moist cloth to clean the handle. Never use compressed air, scouring pads, abrasive cleaning agents or aggressive liquids such as petrol or acetone to clean the appliance.
 - Micro shaver, Cutting element, Nose/ear hair trimmer.
 - Precision trimmer and Lettering head use some lubricating oil, the result is better.
 - **Note:** Clean the appliance every time you have used it.
1. Make sure the appliance is switched off and disconnected from the socket.
 2. Remove any comb and/or attachment from the appliance.
 3. If you have used the micro shaver, separate its top part from its body (Fig. 21).
- The shaving foil is very delicate. Handle it carefully. Replace the top part of the micro shaver if the shaving foil is damaged.
 - Do not clean the shaving foil with the brush as this may cause damage.
4. Blow and/or shake out any hair that has accumulated in the attachments and/or combs.
 5. Clean the attachments and the combs with lukewarm water or with the cleaning brush.
 6. Clean the adapter with the cleaning brush or a dry cloth.
 - Keep the appliance and adapter dry.



Preparing for use

Charging

- Charge the appliance fully before you start using it for the first time or after a long period of disuse.
- It will take approx. 1 hours to fully charge the battery.
- A fully charged appliance you can use it for 120 minutes.
- The appliance does not run from the mains.
- Make sure the appliance is switched off during



Charging!

Insert the appliance plug directly into the appliance(fig.2).

- The charging light indicate that the appliance is charging.
- **Note:** The charging light does not change colour and does not go out when the appliance is fully charged.
- Optimising the lifetime of the rechargeable battery
- Remove the adapter from the wall socket when the battery is fully charged(which takes 1 hours).
- Do not leave the appliance plugged into the wall socket for more than 24 hours.
- Discharge the battery completely twice a year by letting the motor run until it stops.
- Then fully recharge the battery.

Attaching/detaching attachments

All attachments (cutting element,precision trimmer,micro trimmer,micro shaver and nose/ear hair trimmer) can be

Storage

- Store the appliance and attachments in the charging stand to prevent damage.

Replacement

- If the adapter is damaged, always have it replaced with one of the original type in order to avoid a hazard. Only replace damaged or worn attachments or combs with original replacement attachments or combs. Replacement attachments, combs and adapters are available from your dealer and authorised service centres.
- If you have any difficulties obtaining an adapter or replacement attachments and combs for the appliance, contact the Customer Care Centre in your country (you find its phone number in the worldwide guarantee leaflet).

Environment

- Do not throw away the appliance with the normal household waste at the end of its life, but hand it in at an official collection point for recycling. By doing this, you help to preserve the environment. (Fig. 22).
- The built-in rechargeable battery contains substances that may pollute the environment. Always remove the battery before you discard and hand in the appliance at official collection point. Dispose of the battery at an official collection point for batteries. If you have trouble removing the battery, you can also take the appliance to a service centre. The staff of this centre will remove the battery for you and will dispose of it in an environmentally safe way.

